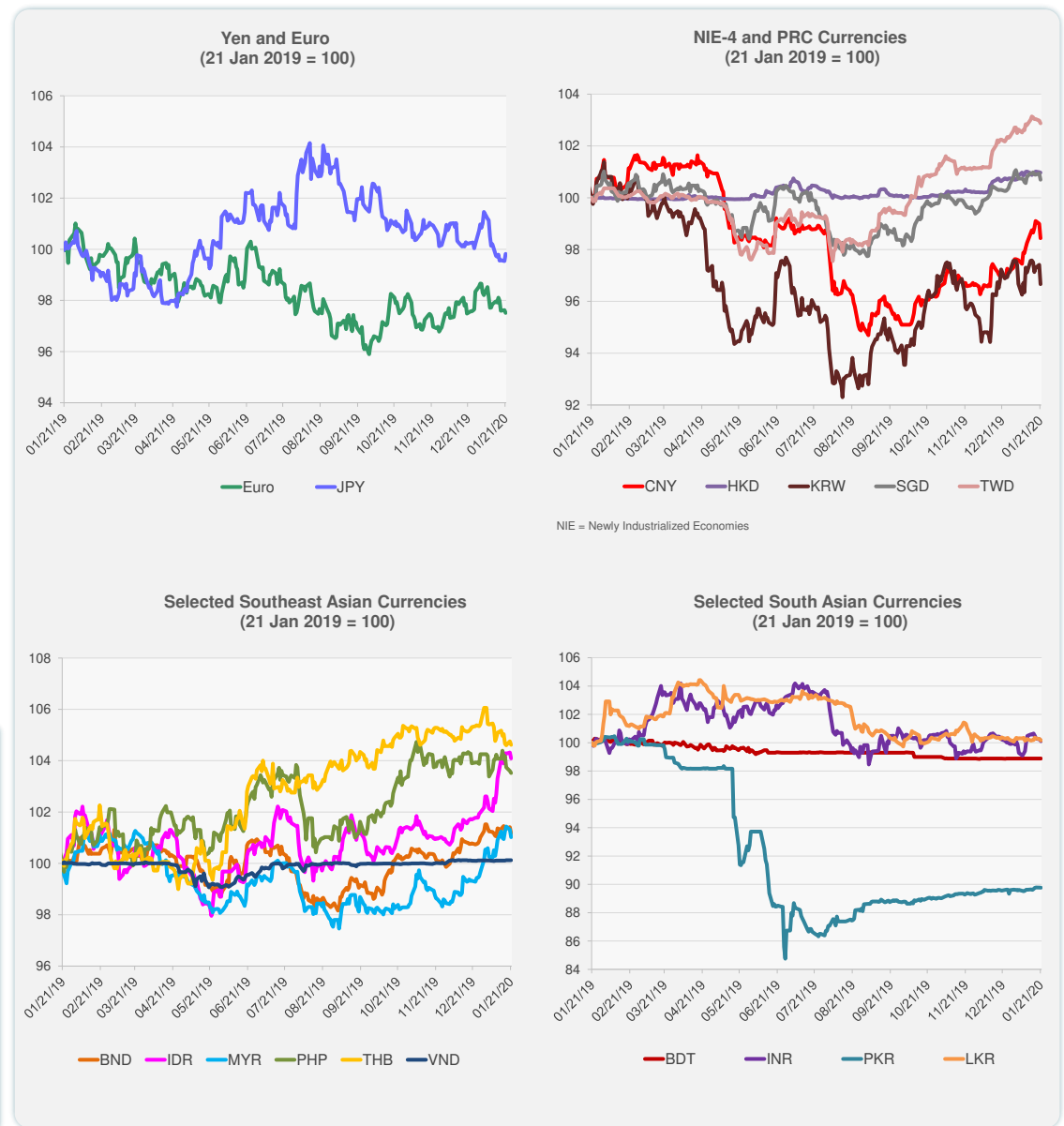
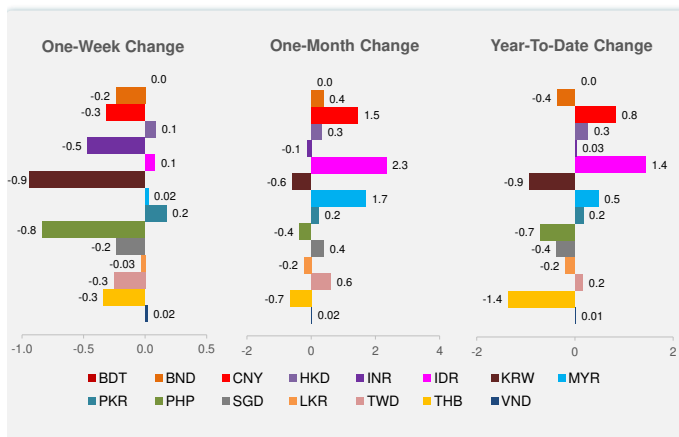


	Latest Closing	% change from Previous Day	% change from 01-Jan-20
Euro	0.90	-0.12	-1.16
Japanese yen (JPY)	109.87	0.28	-1.01
Bangladeshi taka (BDT)	84.88	0.00	0.00
Brunei dollar (BND)	1.35	-0.24	-0.36
Chinese yuan (CNY)	6.91	-0.56	0.83
Hong Kong dollar (HKD)	7.77	-0.02	0.26
Indian rupee (INR)	71.21	-0.14	0.03
Indonesian rupiah (IDR)	13,669.00	-0.22	1.44
Korean won (KRW)	1,167.05	-0.77	-0.93
Malaysian ringgit (MYR)	4.07	-0.29	0.48
Pakistan rupee (PKR)	154.64	-0.01	0.17
Philippine peso (PHP)	51.01	-0.08	-0.71
Singapore dollar (SGD)	1.35	-0.24	-0.37
Sri Lanka rupee (LKR)	181.52	-0.10	-0.19
Taipei,China NT dollar (TWD)	29.99	-0.10	0.16
Thai baht (THB)	30.38	-0.13	-1.36
Vietnamese dong (VND)	23,171.00	0.00	0.01

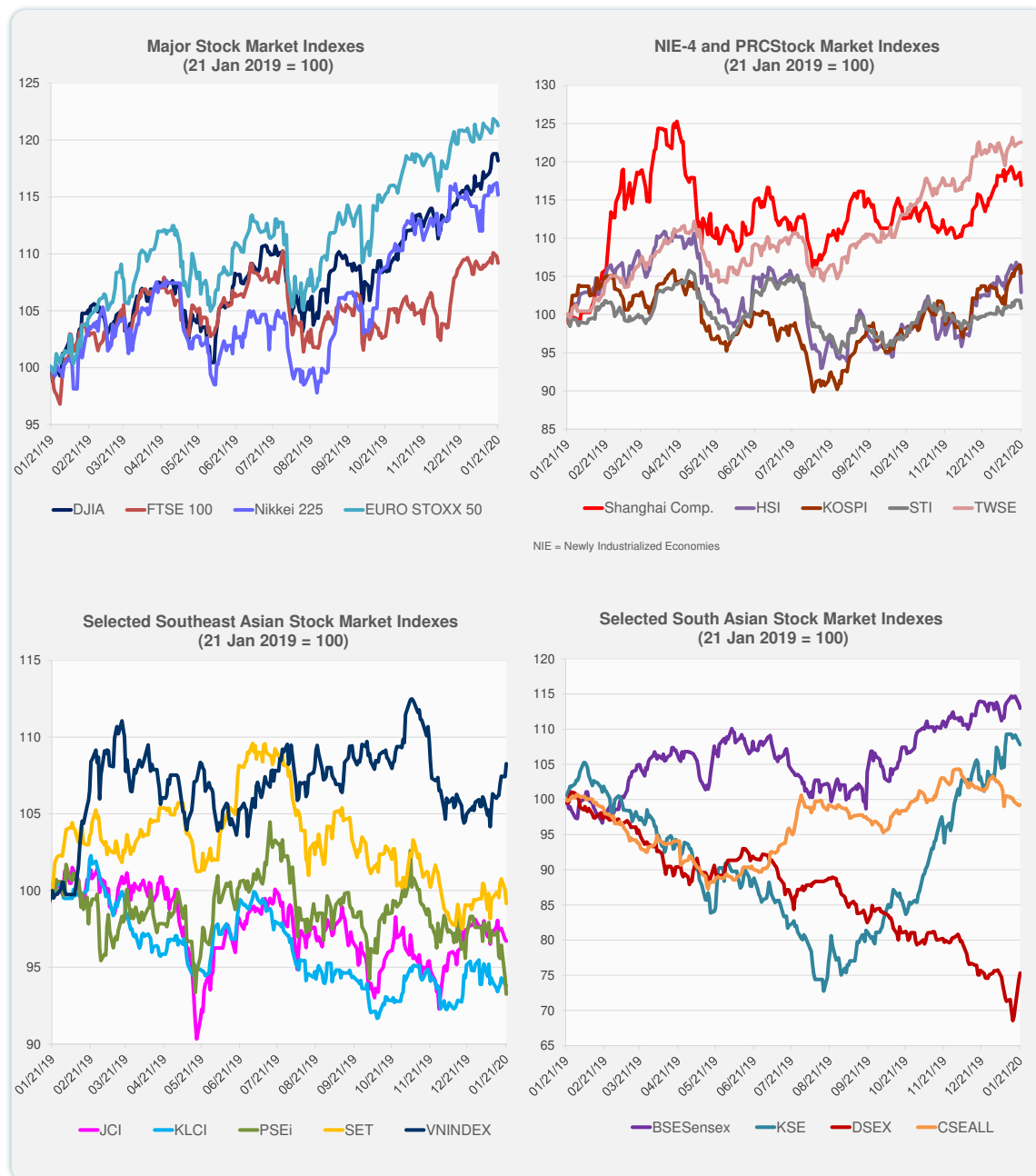
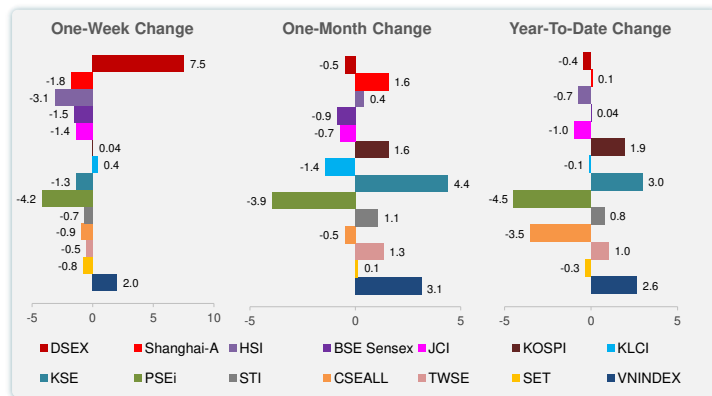


Note: Negative/Decreasing values indicate depreciation of local currency, and positive/increasing values indicate appreciation.  
Source: Bloomberg.



Source: Bloomberg.

	Latest Closing	% change from Previous Day	% change from 01-Jan-20
US Dow Jones Ind Avg	29,196.04	-0.52	2.30
US NASDAQ	9,370.81	-0.19	4.44
US S&P 500	3,320.79	-0.27	2.79
UK FTSE 100	7,610.70	-0.53	0.91
EURO STOXX 50	3,789.12	-0.26	1.17
Japan NIKKEI 225	23,864.56	-0.91	0.88
Bangladesh DSEX	4,434.24	1.19	-0.42
PRC Shanghai Comp.	3,052.14	-1.41	0.07
Hong Kong, China HSI	27,985.33	-2.81	-0.73
India BSE Sensex	41,323.81	-0.49	0.04
Indonesia JCI	6,238.15	-0.11	-0.97
Korea, Rep. of KOSPI	2,239.69	-1.01	1.91
Malaysia KLCI	1,587.33	-0.10	-0.09
Pakistan KSE 100	42,626.48	-0.28	2.96
Philippines PSEi	7,466.65	-1.14	-4.46
Singapore STI	3,247.17	-1.00	0.76
Sri Lanka CSEALL	5,914.33	0.14	-3.51
Taipei, China TWSE	12,118.71	0.00	1.01
Thailand SET	1,574.94	-0.89	-0.31
Viet Nam VNINDEX	986.37	0.79	2.64



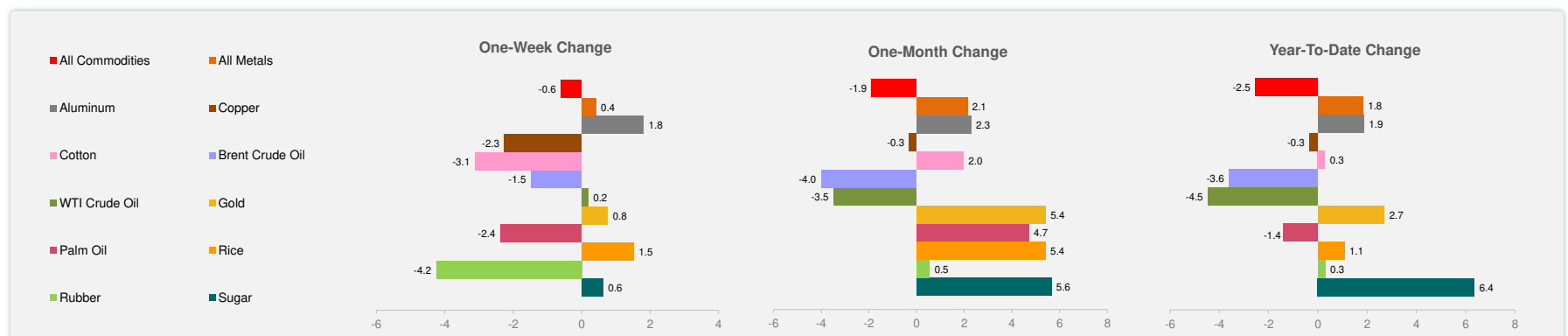
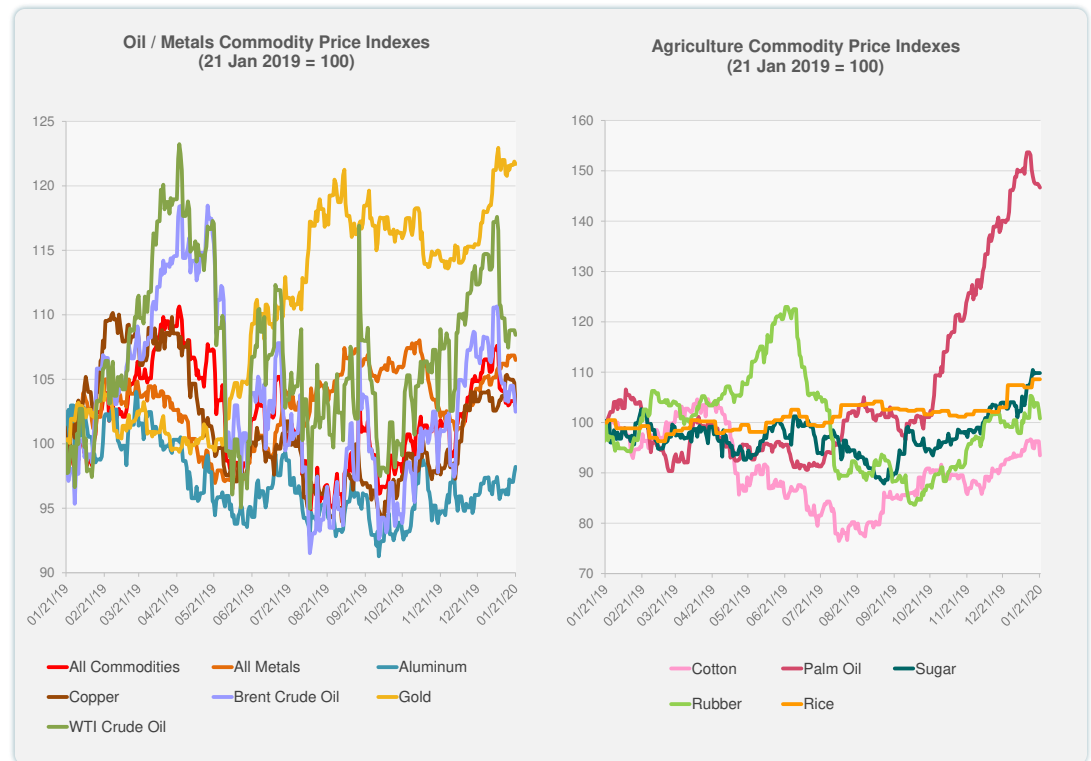
Source: Bloomberg.



Source: Bloomberg.

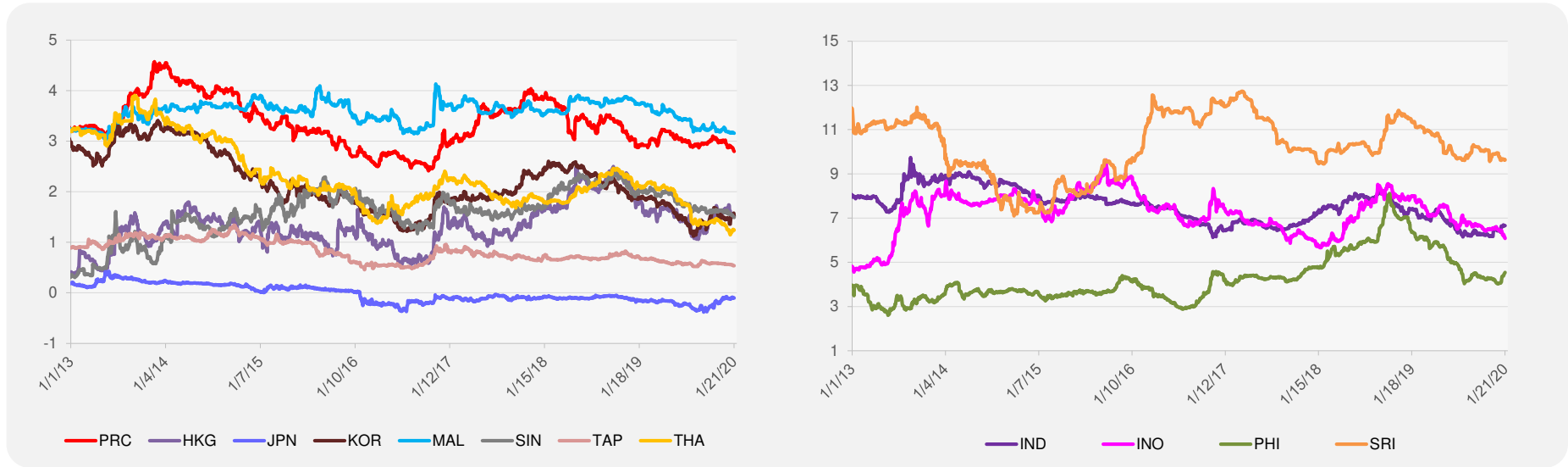
	Unit	Latest Closing	% change from Previous Day	% change from 01-Jan-20
S&P All Commodities	US\$	425.14	-0.41	-2.54
S&P All Metals	US\$	221.53	-0.34	1.83
Aluminum	US\$/metric ton	1,814.50	0.50	1.87
Copper	US\$/metric ton	6,128.50	-1.68	-0.33
Cotton	US cents/lb	66.49	-2.93	0.29
Brent Crude Oil	US\$/barrel	63.92	-1.19	-3.60
WTI Crude Oil	US\$/barrel	58.34	-0.34	-4.45
Gold	US\$/troy oz	1,558.17	-0.17	2.69
Palm Oil	US\$/metric tonne	729.22	-0.29	-1.40
Rice <sup>1</sup>	US\$/metric ton	468.00	0.00	1.08
Rubber <sup>2</sup>	US\$/kg	166.80	-1.71	0.30
Sugar	US cents/lb	14.40	0.00	6.35

<sup>1</sup> Latest closing price from 15 January 2020.  
<sup>2</sup> Singapore Exchange, Ribbed Smoked Sheet Rubber.

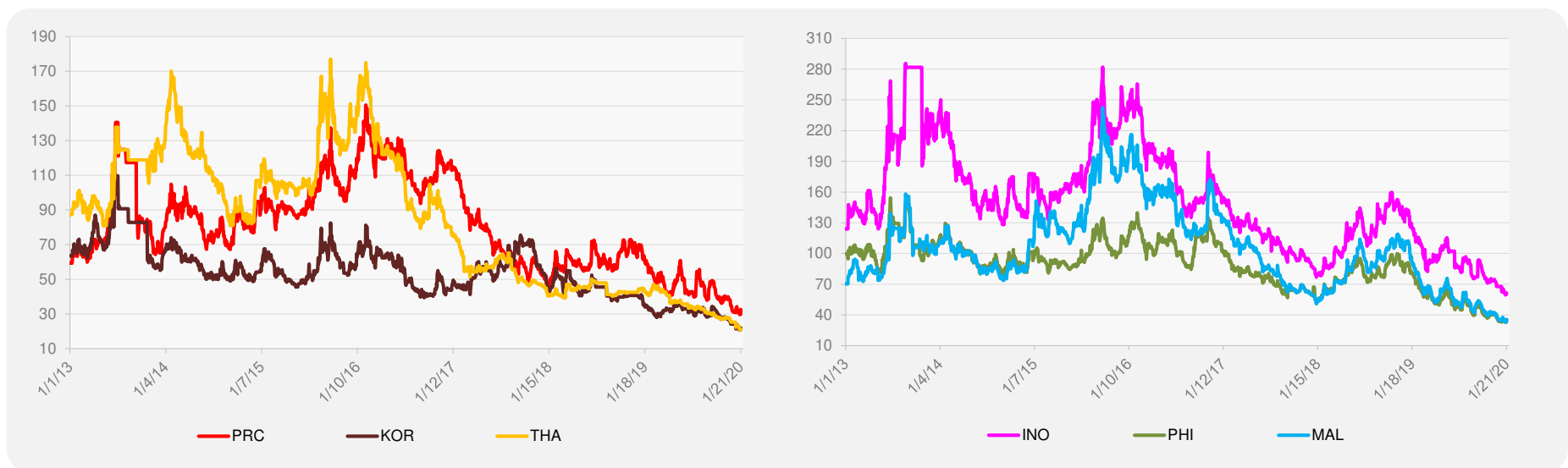


Source: Bloomberg.

### 5-YEAR LOCAL CURRENCY GOVERNMENT BOND YIELDS (%)



### 5-YEAR CREDIT DEFAULT SWAP<sup>1</sup>



<sup>1</sup> In USD and based on sovereign bonds.  
Source: Bloomberg.